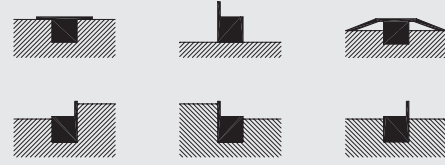
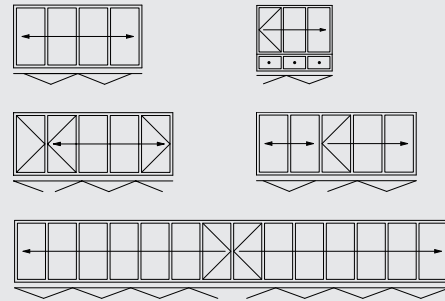


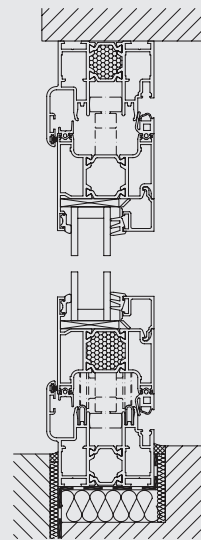
FLOOR TRACKS



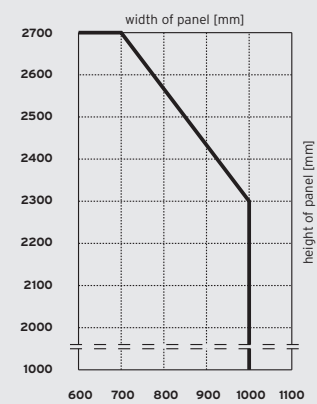
CONFIGURATION VARIANTS



VERTICAL SECTION



PANEL SIZE CHART



SYSTEM

- ▮ Floor mounted (standard) or top-hung folding glass door
- ▮ Panels can be ordered to open either internally or externally, to the left and/or right

SYSTEM PROFILE

- ▮ Element thickness 59 mm, 24 mm thermal break
- ▮ Narrow frames and panel profiles (panel joint 130 mm)
- ▮ High stability due to tongue-and-groove interlocking panel profile and robust corner joints with thermal insulation
- ▮ Flush floor track without upstand for disabled access available
- ▮ Sealed against wind and rain by double wraparound seal

WINDOW/DOOR SYSTEM

- ▮ Complete window system to match the folding glass door is available: tilt and turn, parallel slide and tilt, fixed panels

FITTINGS

- ▮ No protruding runner and guide tracks
- ▮ Concealed fittings for one handed operation
- ▮ Lockable in any partly open position

GLAZING

- ▮ Heat-insulating glass as standard
- ▮ $U_g = 1,1 \text{ W/m}^2\text{K}$ ($k = 1,0$) with 2 x 4 mm float glass
- ▮ Glass thicknesses from 5 to 40 mm available

SURFACE FINISH

- ▮ Powder coating to RAL
- ▮ Anodised aluminium to EURAS

U-VALUE

- ▮ $U_w = 1,3 \text{ W/m}^2\text{K}$ ($U_g = 0,7 \text{ W/m}^2\text{K}$, insulated seldedge) according to DIN EN ISO 10077 on the basis of a three-panel folding glass door, WxH 2700 x 2300 mm

MAXIMUM PANEL SIZES

- ▮ 1000 x 2300 mm
- ▮ 700 x 2700 mm
- ▮ Panel weight up to 80 kg
- ▮ Special sizes on request

TESTED FOR

- ▮ Ventilation Class 4 to DIN EN 1026 / 12207
- ▮ Impermeability to rain Class 7A to DIN EN 1027 / 12208 (matches stress group C according to DIN 18 055)
- ▮ Resistance to wind Class B4 to DIN EN 12211 / 12210
- ▮ Long-term functional performance Class 3 to DIN EN 1191 / 12400 (20,000 operations)



5670206-900 / 012011 / subject to technical changes



FOLDING GLASS DOOR
SL 60e



SAFE OPERATION

The swing panel is locked by means of a special catch ensuring the door can be carried along safely.



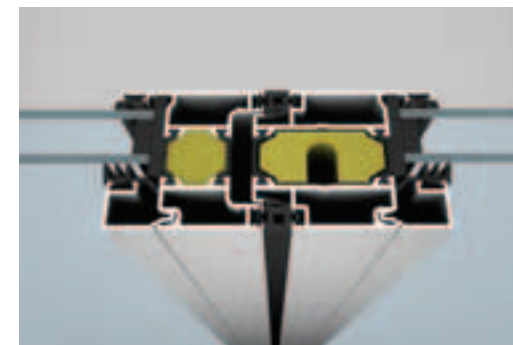
ENGINEERED

Long-lasting stainless steel runners and tracks ensure easy, quiet and smooth operation of the folding glass doors.



HEAT INSULATION

Solid multi-chamber profiles with foam core offer the best heat insulation according to the latest energy conservation regulations (EnEV).



CLEANING

The exterior of top hung folding glass doors can be easily cleaned by simply removing the hinge pins.



STABILITY

Espagnolettes with 24 mm throw lock the panels into the top and bottom track of the frame ensuring they withstand gales and afford high security.



HEIGHT ADJUSTMENT

Even after installation the folding glass door can be easily height-adjusted by about 6 mm - which is important if settling of the building occurs.



SECURITY / COMFORT

The integrated multipoint locking system and the comfortable door handle with catch bolt, lock and profile cylinder ensure high security.



WIDTH ADJUSTMENT

The width of the panels can be altered easily by adjusting the hinges with a screwdriver.

